

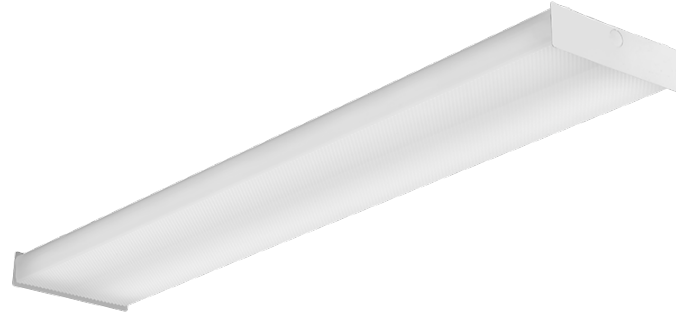


Catalog Number
Notes
Type

Contractor Select™

SB LED Square Basket Wraparound

Linear Flush Mount



Square-basket LED wraparound designed to deliver ambient lighting for surface-mount ceiling applications. Ideal for schools, offices, hospitals and many other applications.

FEATURES:

- Designed to replace existing 2-lamp T8 and T12 fluorescent
- Standard MVOLT (120-277) 0-10V dimming driver
- Available in two CCTs: 3500K and 4000K

Catalog Number	UPC	Description	Lumens	Input Watts	CCT	CRI	Voltage	Pallet qty.
SBL4 LP835 (CI-254RKP)	00190887819410	4' LED Wraparound	3,933	32W	3500K	80	120-277V	70
SBL4 LP840 (CI-254RKU)	00190887819434	4' LED Wraparound	3,994	32W	4000K	80	120-277V	70

More configurations are available. [Click here](#) or visit www.acuitybrands.com and search for SBL LED Square Basket Wraparound.



Specifications

INTENDED USE:

SBL LED wraparound provides a digital lighting platform to deliver general ambient lighting for surface-mount applications. The SBL provides a similar look to that of an existing fluorescent wrap with all of the excellent benefits of LED: energy savings, long life, and maintenance savings. Ideal for closets, storage rooms, and offices. Certain airborne contaminants can diminish integrity of acrylic. [Click here for Acrylic Environmental Compatibility table for suitable uses.](#) **Certain airborne contaminants can diminish integrity of acrylic. [Click here for Acrylic Environmental Compatibility table for suitable uses.](#)**

CONSTRUCTION:

Linear side prisms control brightness, pyramidal bottom prisms minimize lamp image. Continuous side flanges on fixture body provide light trap and continuous diffuser support to prevent accidental opening and simplify maintenance. Full depth, white enamel end plates. Die-formed from code gauge cold-rolled steel. Channel cover snaps into place without the use of tools. Full end cap factory installed to reduce job site labor.

OPTICS:

The translucent white diffuser reduces glare and pixilation without impacting performance.

ELECTRICAL:

Long-life LEDs, coupled with high-efficiency drivers, provide extended service life. 90% LED lumen maintenance at 50,000 hours (L90/50,000).

SUSPENSION KIT CEILING TYPES:

F1 for use with most T-bar and screw slot grid ceiling applications. Designed for on-grid and off-grid installations.

F2 for use with recessed or surface-mount horizontal J-box applications. For unit or row installation; surface or suspend mounting.

Individual installation – Two single-stem hangers required.

For aircraft cable, one STACG_, STACGF_, or STACGE_ required for each suspension point.

LISTINGS:

CSA certified to U.S. and Canadian standards. Damp listed.

DesignLights Consortium® (DLC) qualified product. Not all versions of this product may be DLC qualified. Please check the DLC Qualified Products List at www.designlights.org/QPL to confirm which versions are qualified.

WARRANTY:

5-year limited warranty. This is the only warranty provided and no other statements in this specification sheet create any warranty of any kind. All other express and implied warranties are disclaimed. Complete warranty terms located at: www.acuitybrands.com/support/customer-support/terms-and-conditions

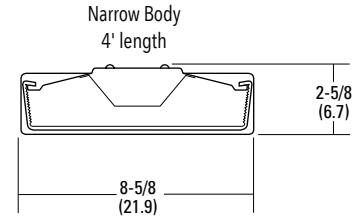
Note: Actual performance may differ as a result of end-user environment and application. All values are design or typical values, measured under laboratory conditions at 25 °C. Specifications subject to change without notice.

Dimensions

Length: 48 (122.0)

Width: 8-5/8 (21.9)

Depth: 2-5/8 (6.7)



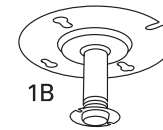
MOUNTING DATA

Individual Installation –

Two single-stem hangers required.

Row Installation –

One hanger per fixture plus one row required.



All dimensions are inches (centimeters) unless otherwise indicated.